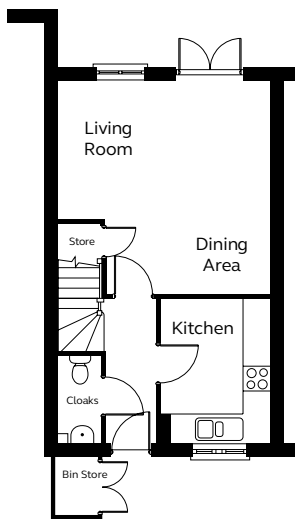


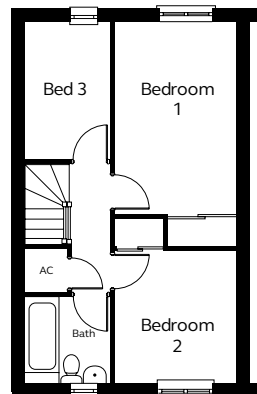


Typical CGI, not site specific.

## GROUND FLOOR



## FIRST FLOOR



The Culm is a popular housetype with separate kitchen and open plan living / dining room, understairs cupboard and cloakroom to the ground floor.

Upstairs are three bedrooms, two with fitted wardrobes, and a family bathroom.

### Ground Floor

Kitchen  
2.42m x 3.15m  
Living Room /  
Dining Area  
4.64m (max) 3.65m  
(min) x 4.71m (max)  
3.00m (min)  
Cloakroom  
0.90m x 1.90m

### First Floor

Bedroom 1  
2.65m (max) 1.49m  
(min) x 4.96m (max)  
4.22m (min) incl.  
wardrobe  
Bedroom 2  
2.65m (max) 1.07m  
(min) x 3.63m (max)  
2.89m (min) incl.  
wardrobe  
Bedroom 3  
1.88m x 3.00m  
Bathroom  
1.88m x 1.90m

Please note  
Kitchen layouts  
are indicative only,  
please talk to us  
for details.