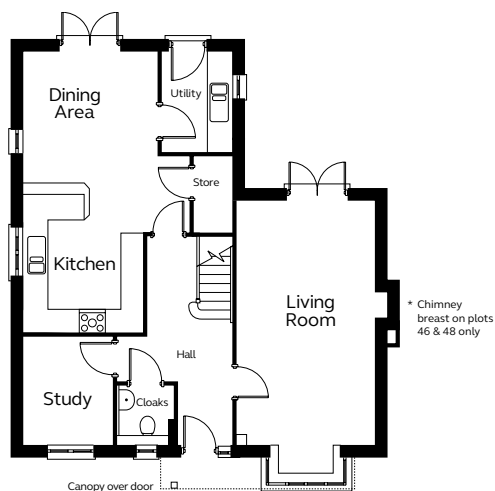


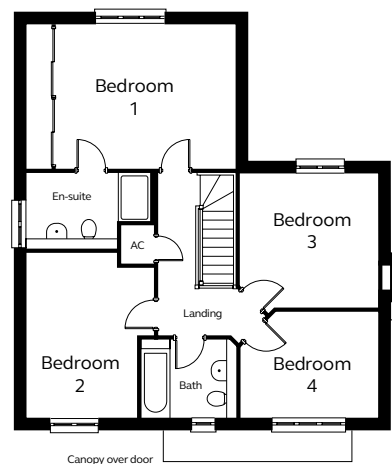


Typical CGI, not site specific.

## GROUND FLOOR



## FIRST FLOOR



The Morris is an imposing four bedroom detached house.

To the ground floor is an open plan kitchen / dining room, separate utility, living room with bay window and chimney, study and cloakroom.

The first floor comprises four bedrooms and a family bathroom. The master bedroom includes an ensuite shower room and fitted wardrobes.

### Ground Floor

Kitchen / Dining Area  
3.32m (max) 3.00m (min) x 7.02m (max) 4.47m (min)

Living Room  
3.39m x 6.09m excl. bay window

Study  
2.19m x 2.64m

Utility  
1.72m x 2.47m

Cloakroom  
1.36m x 1.46m

### First Floor

Bedroom 1  
5.20m x 3.63m incl. wardrobe

En-suite  
3.08m (max) 2.26m (min) x 1.89m (max) 1.20m (min)

Bedroom 2  
3.15m (max) 2.26m (min) x 4.10m (max) 3.72m (min)

Bedroom 3  
2.86m (max) 2.04m (min) x 2.53m (max) 1.71m (min)

Bedroom 4  
3.39m x 2.61m

Bathroom  
2.31m x 1.93m

Please note  
Kitchen layouts are indicative only.

Plots will vary in design and include a bay window, please check with sales executive.

Plots 36 and 37 do not have chimney breast.